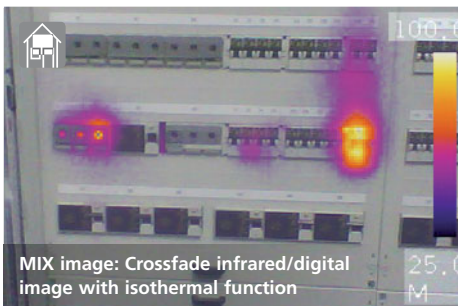
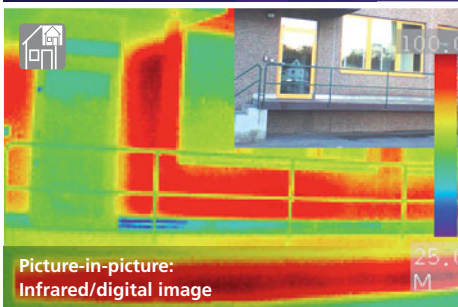
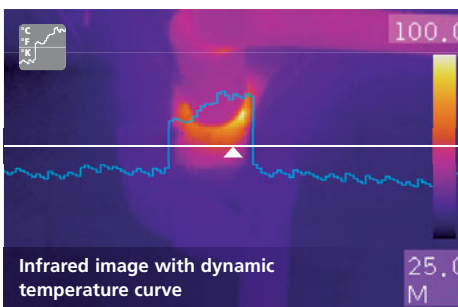


## ThermoCamera-Vision



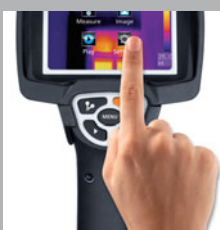
High-resolution thermal camera for professional applications in construction, photovoltaics, electrical engineering and mechanical engineering.

Rev.1112

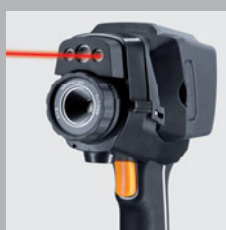


- Large, high-resolution 3.5" colour display with touch screen for direct control and analysis
- 160 x 120 pixel infrared sensor with focusable interchangeable lens (optional) enables detailed and varied image analysis
- 50 fps high-speed infrared sensor suitable for fast and dynamic procedures
- Large measuring range from -20°C to 400°C
- Analysis in various image modes:  
**Full screen:** Infrared image, camera  
**Picture-in-picture:** Infrared/camera, camera/infrared  
**Dual-image:** Infrared/camera crossfade
- Standard colour ranges as well as user-specific colour ranges
- Measured value correction for ambient and offset temperature, relative humidity, measuring distance
- Extended real-time analysis:  
 3 measuring points, 2 measuring lines (horizontal/vertical),  
 3 measuring areas (with min/max/avg with min/max/avg calculation)
- Automatic hot/cold point marking and isothermal function
- Image and video recordings for documentation with additional voice recording and text notes

| TECHNICAL DATA                      |  |
|-------------------------------------|--|
| <b>IR SENSOR</b>                    | uncooled microbolometer, 8-14 µm, 160 x 120 pixel resolution, 50 fps             |
|                                     | 80 mK NETD<br>±2°C or ±2% of measured value                                      |
|                                     | -20 °C ... 150 °C / 0 °C ... 400 °C  |
| <b>IR OPTICS</b>                    | Germanium interchangeable lens, 33° x 24° FOV                                    |
|                                     | 3.33 mrad IFOV, manual focus 0.3 m min.  |
| <b>DIGITAL CAMERA</b>               | Resolution: 640 x 480 pixels   |
| <b>DISPLAY</b>                      | 3.5" colour TFT touch screen display   |
| <b>IMAGE MODES</b>                  | Infrared, Digital, Picture-in-picture, MIX image                                 |
| <b>IMAGE FUNCTION</b>               | 1-2x digital zoom, rotation 0° - 360°, in steps of 1°                            |
| <b>FORMAT</b>                       | JPEG format, max. 640 x 480 pixels<br>MPEG-4 Standard, 640 x 480 pixels, 30 fps  |
| <b>MEMORY FUNCTION</b>              | Micro-SD card up to 16 GB  |
| <b>LED</b>                          | white LED, object lighting   |
| <b>TARGET LASER</b>                 | Laser classe 2, < 1 mW   |
| <b>PORTS</b>                        | USB, micro-SD, video, audio, headphones-microphone                               |
| <b>PROTECTION CLASS</b>             | IP65, drop test 2 m, Impact 25 g (IEC60068-2-29)<br>Vibration 2 g (IEC60068-2-6) |
| <b>POWER SUPPLY / CHARGING TIME</b> | Li-Ion pack battery 7.4V / 2.7Ah / 7 hours                                       |
| <b>DIMENSIONS</b>                   | 243 mm x 103 mm x 160 mm   |
| <b>WEIGHT</b>                       | 920 g (incl. battery pack)   |



3.5" colour display with touch screen



Target laser for pinpointing



LED object lighting



1/4" tripod adapter



### ThermoCamera-Vision

- including carrying case
- + 2x Li-Ion battery pack
  - + 4 GB micro-SD card
  - + Micro-SD adapter
  - + USB cable
  - + Video/audio cable
  - + Tripod adapter
  - + Headphones
  - + Power supply / battery charger incl. internal adapter
  - + external charging station
  - + Software
- Packing dimension** (W x H x D)  
450 x 375 x 125 mm

| ARTICLE             | ARTICLE NO | EAN-CODE        | PU |
|---------------------|------------|-----------------|----|
| ThermoCamera-Vision | 082.085A   | 4 021563 684458 | 1  |

|                |                |         |      |                      |                           |                     |              |               |       |     |           |       |      |             |      |
|----------------|----------------|---------|------|----------------------|---------------------------|---------------------|--------------|---------------|-------|-----|-----------|-------|------|-------------|------|
| <b>DISPLAY</b> | TOUCH 3.5" TFT | ZOOM 2x | 360° | <b>SENSOR/CAMERA</b> | IR-SENSOR 160 x 120 pixel | JPG 640 x 480 pixel | Laser 635 nm | REC 2 jpg/avi | Micro | USB | LED LIGHT | IP 65 | 1/4" | RECHARGE 7h | HARD |
|----------------|----------------|---------|------|----------------------|---------------------------|---------------------|--------------|---------------|-------|-----|-----------|-------|------|-------------|------|