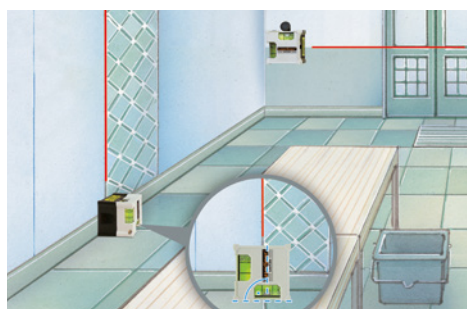


## LaserCube

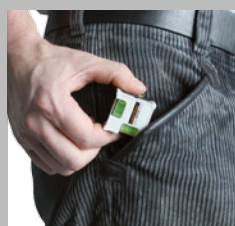
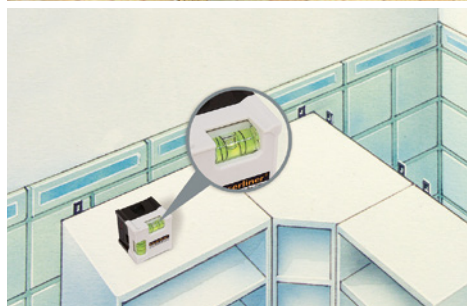


Practical line laser  
for quick alignment work  
on the ground and on walls

Rev.0416



- Clean application on all surfaces  
- with special pins as well
- Easy alignment via horizontal and vertical vials
- Can be used as a laser spirit level
- Allows for measurement of sloped planes
- Bright laser
- Compact thanks to mini cube housing



Practical cube housing



Easy alignment via vials



Special pins  
for fastening

TECHNICAL DATA	
ACCURACY	± 1 mm / m
LASER WAVELENGTH	635 nm
LASER CLASS / LINE LASER OUTPUT POWER	2 / < 1 mW
POWER SUPPLY	3 x button cell (LR 44 / AG13 / V13GA)
OPERATING TIME	4 hrs
WORKING TEMPERATURE	0°C ... +40°C
STORAGE TEMPERATURE	-10°C ... +70°C
DIMENSIONS (W x H x D)	38 x 38 x 38 mm
WEIGHT (incl. batteries)	36 g



LaserCube

+ pins  
+ batteries

Packing dimension (W x H x D)

-

ARTICLE	ARTICLE NO	EAN-CODE	PU
LaserCube	081.108A	4 021563 687848	5

